

SECTION: 29,30,31,32	TOWNSHIP: 3 South	RANGE: 9 West
COUNTY: Tillamook		DATE: 01/18/2023
CORNER DESIGNATION: Section corner common to sections 29, 30, 31 and 32, Township 3 South, Range 9 West, Willamette Meridian, Tillamook County, Oregon.		(Please check one)
		<input type="checkbox"/> Condition Report Only
		<input type="checkbox"/> Restoration
		<input checked="" type="checkbox"/> Rewitness
		<input type="checkbox"/> Unrecorded
		<input type="checkbox"/> Reset at surface
		<input type="checkbox"/> Referenced Out

Previous Rewitnesses, Restorations and Surveys, etc... G.L.O. 3S 9W pg. 36 (1880), Rewitness Bk. 1 pg. 5 (1887), Rewitness Bk. 4 pg. 17 (1905), A-238 (1946), A-330 (1959), A-823 (1959), B-554 (1967), Rewitness Card #524 (1971), F-40-375 (1972), F-40-377 (1972), B-616 (1972), F-15-19 (1979), B-1180 (1984), A-5578 (1987), P-401 (1997), B-2702 (2003), B-3024 (2006), P-987 (2010), P-998 (2011), B-3545 (2013), A-8518 (2015), B-3865 (2018).

History, condition, and sources: In 1880 under G.L.O. contract #364 Samuel G. Caudle set post for corner to sections 29, 30, 31 and 32. He set 4 B.T.'s. In 1887 R. Hayes located corner and 2 accessories (Rewitness Bk. 1 pg. 5). He set 2 new B.T.'s. In 1905 (Bk. 4 pg. 17) post was located and 2 B.T.'s set. In 1959 (A-823) John Carlich set 1.5" iron pipe and 2 B.T.'s. In 1971 (Rewitness Card #524) Tillamook County Surveyor's Office set a 2" iron pipe with a 3" Tillamook County Brass Cap stamped as shown hereon in place of found 1.5 " iron pipe, also added a Hat Section Post (1.5' South) with a yellow metal location tag and located 2 record B.T.'s. In 2015 Tillamook County Surveyor's Office added 2 B.T.'s for accessories but no record exists except for the found yellow metal location tag on 2 trees. In 2023 Tillamook County Surveyor's Office found a 3" Dia. Tillamook County Brass Cap in concrete and tile in good condition and added the 2 found unrecorded B.T.'s.

- Found: (Rewitness Card #524) 18" Maple N 17° 45' E 27.17'. Now 28" Snag with no tags.
- Found: (Rewitness Card #524) 24" Maple S 59° W 35.63'. Now cluster of Maples with Attention tag.
- Found: (Unrecorded) 16" Alder with yellow metal location tag. N 30° W 36'. Not of record.
- Found: (Unrecorded) 15" Alder with yellow metal location tag. Not of record. Initialed and dated by Tillamook County Surveyor's Office.
- Found: (Rewitness Card #524) Hat Section South 1.5'
- Found: (Rewitness Card #524) Orange Carsonite Post East 3.7'

New accessories set:
The Monument was tied conventionally using G.P.S. established control. The coordinates have been converted and are provided here in WGS 84, Latitude and Longitude.

Latitude: 45° 16' 24.12"
Longitude: 123° 49' 28.86"

Pictures of Found Monuments:



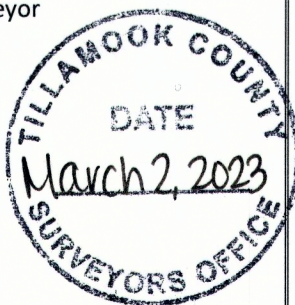
Location: From the intersection of Blaine and Bixby Road travel ±1 mile on Bixby Road to a private drive on south side of road. Starting from private drive travel ±340' south from edge of Bixby Road to Section Corner.

Tillamook County Surveyor's Office: 1510 3rd Street Suite C, Tillamook, OR. 97141

Party Chief: Michael Rice, PLS 86926, Tillamook County Surveyor

Witnesses: Travis Porter, Survey Supervisor
Kael Poklikuha, Survey Technician

Notes: Digital images taken of monument and accessories.



SURVEYOR'S SEAL

REGISTERED
PROFESSIONAL
LAND SURVEYOR

Michael Rice

OREGON
DECEMBER 11, 2012
MICHAEL R. RICE
86926

RENEWAL 12-31-2024